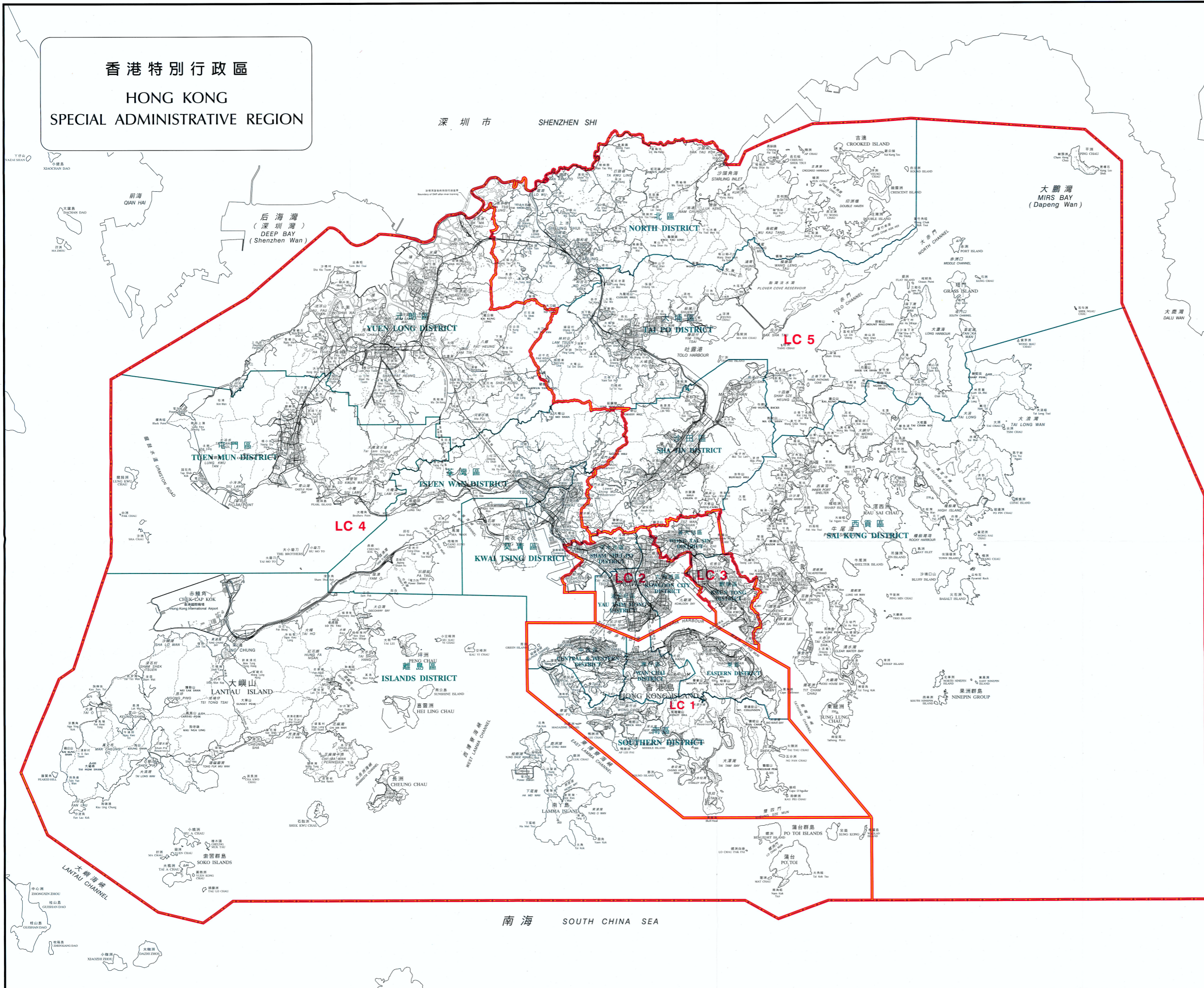


香港特別行政區  
HONG KONG  
SPECIAL ADMINISTRATIVE REGION

深圳市 SHENZHEN SHI

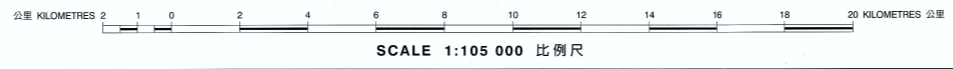


-  二零零四年立法會暫定選區界線  
(沿用二零零零年立法會選區界線  
並與區界線重疊)  
Proposed 2004 Legislative Council  
Constituency Area Boundary  
(adopting 2000 Legislative Council  
Constituency Area Boundary and  
coincides with District Boundary)
-  區界線  
District Boundary
- LC 1**  
二零零四年立法會暫定選區代號  
Proposed 2004 Legislative Council  
Constituency Area Code
-  特別行政區界  
Boundary of Special Administrative Region

暫定立法會選區  
Proposed Legislative Council Constituency Areas

立法會選區 Legislative Council Constituency Area	所包括的地區 Districts Included	參考圖則編號 Reference Plan No.
<b>LC 1</b> 香港島 Hong Kong Island	中西區 Central & Western 灣仔 Wan Chai 東區 Eastern 南區 Southern	LCCA/C/2004/HK
<b>LC 2</b> 九龍西 Kowloon West	油尖旺 Yau Tsim Mong 深水埗 Sham Shui Po 九龍城 Kowloon City	LCCA/C/2004/ KLN-W&E
<b>LC 3</b> 九龍東 Kowloon East	黃大仙 Wong Tai Sin 觀塘 Kwun Tong	
<b>LC 4</b> 新界西 New Territories West	荃灣 Tsuen Wan 屯門 Tuen Mun 元朗 Yuen Long 葵青 Kwai Tsing 離島 Islands	LCCA/C/2004/NT-W
<b>LC 5</b> 新界東 New Territories East	北區 North 大埔 Tai Po 沙田 Sha Tin 西貢 Sai Kung	LCCA/C/2004/NT-E

二零零四年立法會選區分界圖索引  
2004 LEGISLATIVE COUNCIL ELECTORAL BOUNDARIES INDEX



圖則編號  
Plan No. **LCCA/C/2004/INDEX**  
二零零三年七月版 July, 2003 Edition  
選舉管理委員會刊印  
Published by the Electoral Affairs Commission  
版權所有 未經許可 不得複製 © Copyright reserved - reproduction by permission only  
地政總署測繪處繪製  
Cartography by Survey & Mapping Office, Lands Department