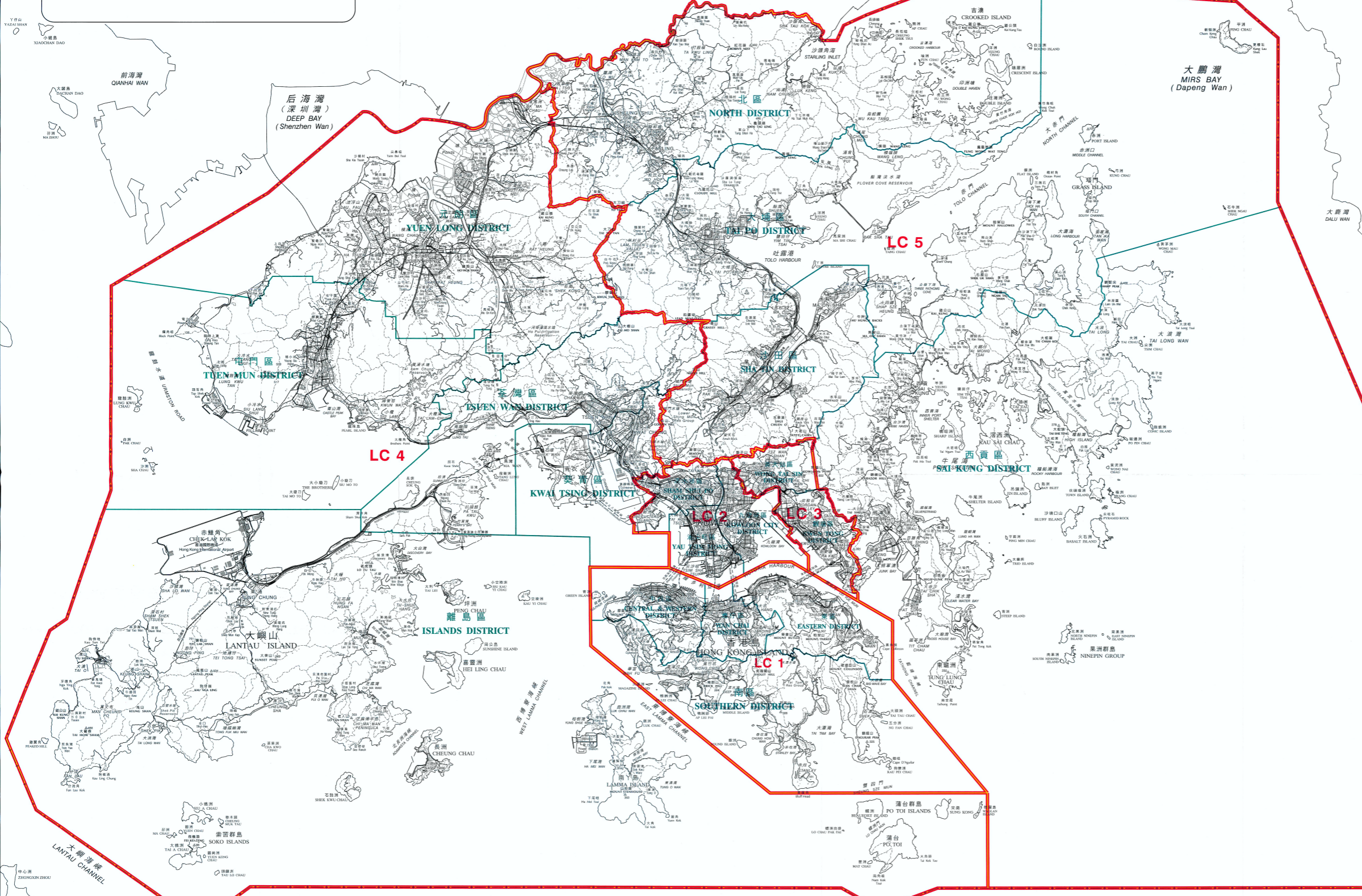


香港特別行政區
HONG KONG
SPECIAL ADMINISTRATIVE REGION

深圳市 SHENZHEN SHI

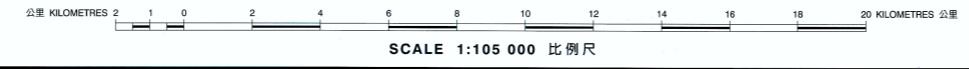


- 二零零八年立法會暫定地方選區界線
(沿用二零零四年立法會地方選區界線
並與區界線重疊)
Proposed 2008 Legislative Council
Geographical Constituency Area Boundary
(adopting 2004 Legislative Council
Geographical Constituency Area Boundary
and coincides with District Boundary)
- 二零零八年立法會暫定地方選區界線
(與區界線重疊)
Proposed 2008 Legislative Council
Geographical Constituency Area Boundary
(coincides with District Boundary)
- 二零零四年立法會地方選區界線
2004 Legislative Council
Geographical Constituency Area Boundary
- 區界線
District Boundary
- 二零零八年立法會暫定地方選區代號
Proposed 2008 Legislative Council
Geographical Constituency Area Code
- 特別行政區界
Boundary of Special Administrative Region

暫定立法會地方選區
Proposed Legislative Council Geographical Constituency Areas

代號 Code	立法會地方選區 Legislative Council Geographical Constituency Area	所包括的地區 Districts Included	參考圖則編號 Reference Plan No.
LC 1	香港島 Hong Kong Island	中西區 Central & Western 灣仔 Wan Chai 東區 Eastern 南區 Southern	LCCA/C/2008/HK
LC 2	九龍西 Kowloon West	油尖旺 Yau Tsim Mong 深水埗 Sham Shui Po 九龍城 Kowloon City	LCCA/C/2008/ KLN-W&E
LC 3	九龍東 Kowloon East	黃大仙 Wong Tai Sin 觀塘 Kwun Tong	
LC 4	新界西 New Territories West	荃灣 Tsuen Wan 屯門 Tuen Mun 元朗 Yuen Long 葵青 Kwai Tsing 離島 Islands	LCCA/C/2008/NT-W
LC 5	新界東 New Territories East	北區 North 大埔 Tai Po 沙田 Sha Tin 西貢 Sai Kung	LCCA/C/2008/NT-E

二零零八年立法會選區分界圖索引
2008 LEGISLATIVE COUNCIL ELECTORAL BOUNDARIES INDEX



圖則編號
Plan No. LCCA/C/2008/INDEX
二零零七年七月版
July 2007 Edition

選舉管理委員會刊印
Published by the Electoral Affairs Commission
版權所有 未經許可 不得複製 © 2007 Copyright reserved - reproduction by permission only
地政總署測繪處繪製
Cartography by Survey & Mapping Office, Lands Department