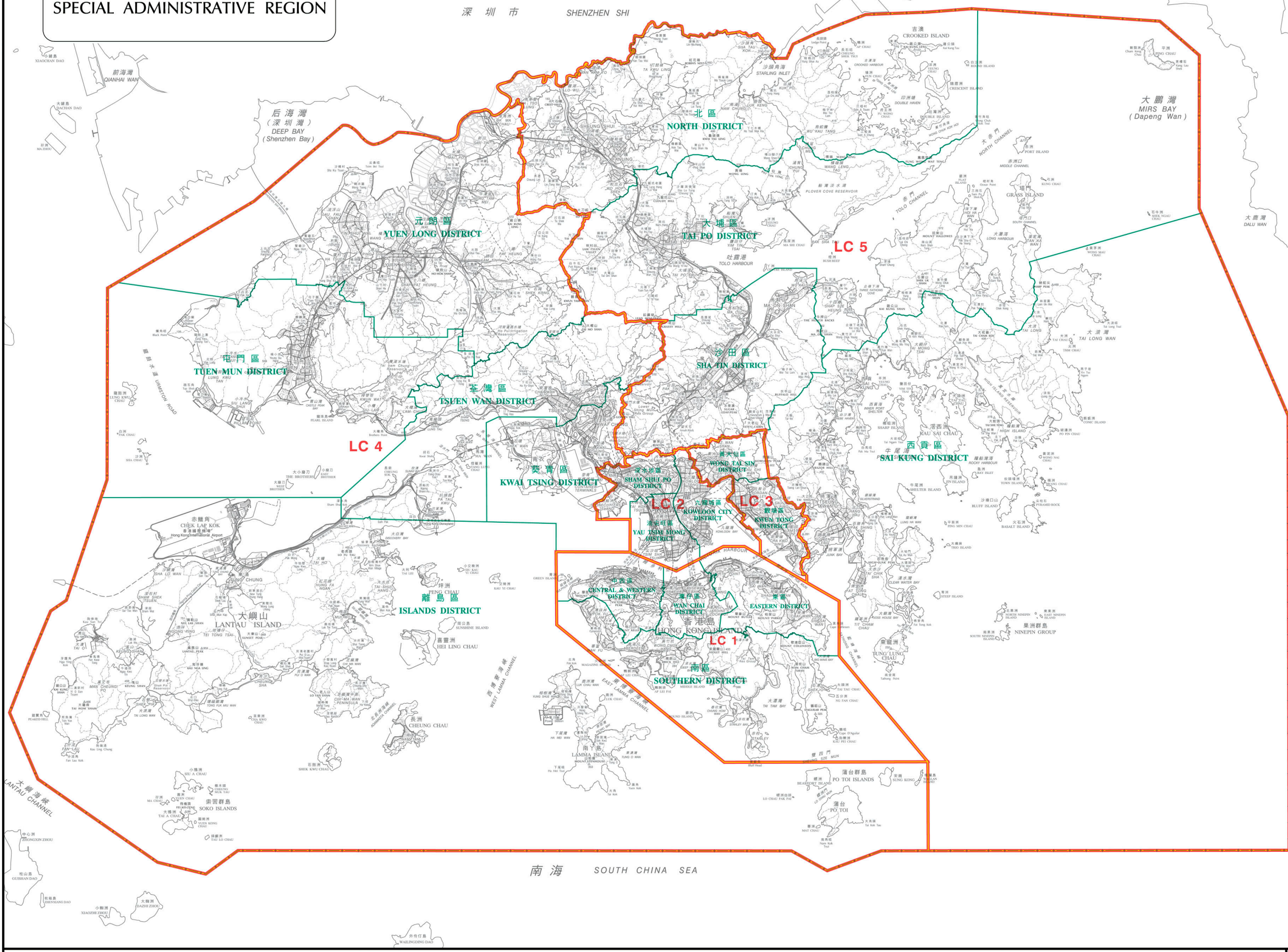


香港特別行政區  
HONG KONG  
SPECIAL ADMINISTRATIVE REGION



二零一六年立法會暫定地方選區界線  
(沿用二零一二年立法會地方選區界線  
並與區界線重疊)

Proposed 2016 Legislative Council  
Geographical Constituency Boundary  
(adopting 2012 Legislative Council  
Geographical Constituency Boundary  
and coincides with District Boundary)

區界線  
District Boundary

LC 1 二零一六年立法會暫定地方選區代號  
Proposed 2016 Legislative Council  
Geographical Constituency Code

特別行政區界  
Boundary of Special Administrative Region

暫定立法會地方選區  
Proposed Legislative Council Geographical Constituencies

代號 Code	立法會地方選區 Legislative Council Geographical Constituency	所包括的地區 Districts Included	參考圖則編號 Reference Plan No.
LC 1	香港島 Hong Kong Island	中西區 Central & Western 灣仔 Wan Chai 東區 Eastern 南區 Southern	LCCA/C/2016/HK
LC 2	九龍西 Kowloon West	油尖旺 Yau Tsim Mong 深水埗 Sham Shui Po 九龍城 Kowloon City	LCCA/C/2016/ KLN-W&E
LC 3	九龍東 Kowloon East	黃大仙 Wong Tai Sin 觀塘 Kwun Tong	
LC 4	新界西 New Territories West	荃灣 Tsuen Wan 屯門 Tuen Mun 元朗 Yuen Long 葵青 Kwai Tsing 離島 Islands	LCCA/C/2016/NT-W
LC 5	新界東 New Territories East	北區 North 大埔 Tai Po 沙田 Sha Tin 西貢 Sai Kung	LCCA/C/2016/NT-E

二零一六年立法會地方選區分界圖索引  
2016 LEGISLATIVE COUNCIL GEOGRAPHICAL CONSTITUENCY BOUNDARIES INDEX MAP



圖則編號  
Plan No. LCCA/C/2016/INDEX

二零一五年五月版  
May 2015 Edition

選舉管理委員會刊印  
Published by the Electoral Affairs Commission

版權所有 未經許可 不得複製 © 2015 Copyright reserved - reproduction by permission only  
地政總署測繪處繪製  
Cartography by Survey & Mapping Office, Lands Department